

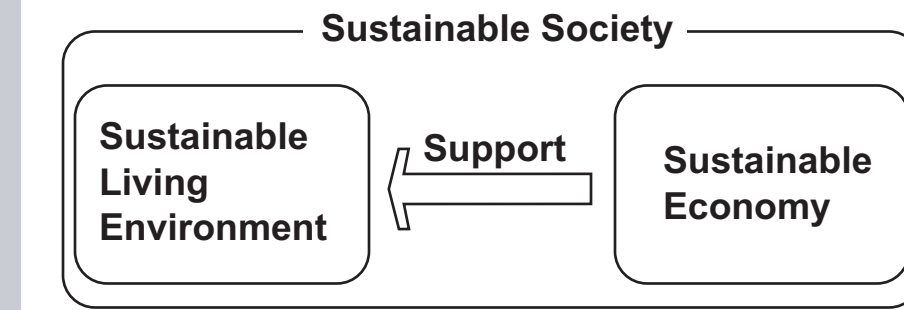
# WIND CORRIDOR

- From Sea to Land for Sustainable Society -

Sustainable living environment cannot be maintained without the support by sustainable economy. We call the status of the former strongly backed up by the latter a "sustainable society".

It is this "sustainable society" that we create in central Cape Cod by proposing Wind Corridor.

With today's information technology, jobs are created where people want to live. However in Cape Cod, in spite of its renowned scenery, the lack of sustainable economy, which is due to the shortage of year-round jobs, has always been a key issue.



## Sustainable Society by Wind Corridor

Wind Corridor is a band that runs from the northern shore of Nantucket, across the sound, through Hyannis Port, and eventually to Yarmouth Port.

It is structured by a curvilinear array of wind turbines both on the sea and the land, and by the first phase of Technology Supported Sustainable Community (TSSC) which includes various facilities such as the existing railroad. TSSC encompasses Barnstable and Yarmouth, and its facilities utilize wind turbines in both direct and indirect ways.

Two phenomena produced by Wind Corridor will make central Cape Cod a sustainable society. One is the increased number of year-round jobs enabled by telework. The other is the heightened image as the most sustainable town in the U.S. which will attract educational and research institutions as well as tourists.

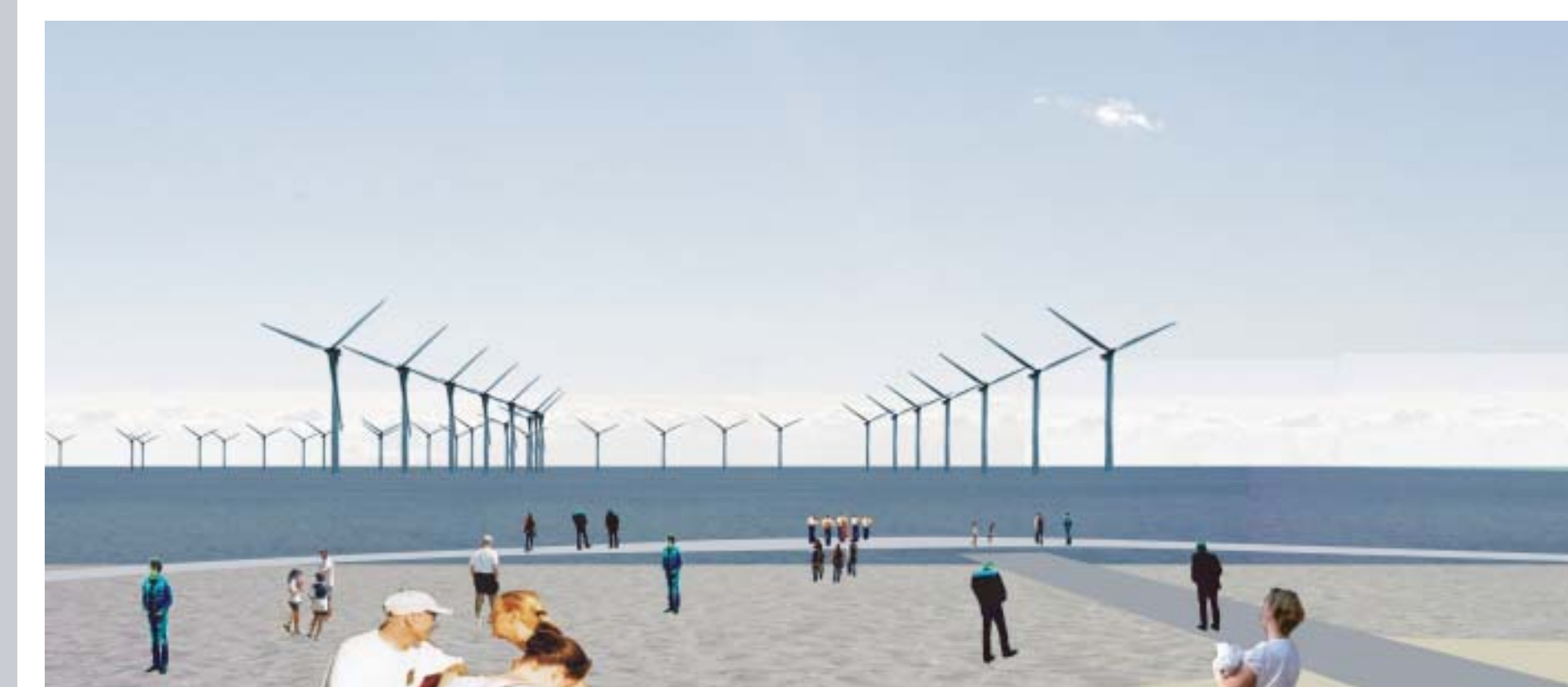
## Attractive Environment for Teleworkers

Telework is work which is independent of the place enabled by IT. Excellent IT infrastructure coupled with additional environmental factors that attract teleworkers, both of which offered by Wind Corridor, will attract many people to the area by allowing them to keep their current jobs. It also provides new telework jobs for current residents. As it can be applied to various occupations in many industries, suitable conditions can stabilize the area economy in the long term. We propose the following environmental elements to attract teleworkers;

- Network connection: Fiber optic lines in the conduit installed for wind turbines and then distributed to home-offices. Wi-Fi network on the sea with antennas on turbine towers.
- Housing: Combined ownership of wind turbines and home-offices will be sold. Pilot houses near the station.
- Natural environment: Preserve and enhance it.
- Intellectual entertainments: Conservatory attached to library, Museum of Sustainability, Theater on the shore, Book stores, Cafe, TSSC Center
- Transportation to metro area: Revitalize the existing railroad and make station multi-functional.

## Present Clear Image as the Nation's Most Sustainable Town

Although the beauty of a wind turbine can be questioned, its visual association with clean energy cannot be underestimated. Instead of keeping them far from people's eyes, we propose to take advantage of their strong presence by arranging them as a series of gates extending from the land to the shore, and into the sea and beyond. This creates not only the good legibility of the seascape but also a new narrative of Nantucket Sound to heighten the image of the area as the most sustainable town in the U.S. We also propose educational/entertainment programs which make the use of the curvilinear alignment to contribute to this image. Some examples are open-air operas with "gates" of turbines as the stage background and story ship rides along the Wind Corridor with hologram images between the turbine towers.



Wind Turbines from Open-Air Theater at Kalmus Beach

