



Pilot Home-Offices
 Combined ownership of wind turbines and home-offices will be sold. Owners association is in TSSC center to help residents work and live in the area.



New Hyannis Station
 New station is on the Main Street for the convenience and visibility as a core of downtown. A Book shop inside. Old station near the route 28 will be renovated as a cafe.



Museum of Sustainability
 This is a science museum as well as an art gallery for works dedicated to sustainable environment.



TSSC Center
 The center leads and supervises all Wind Corridor projects. It also functions both as service center for home-turbine owners and as visitors information center.



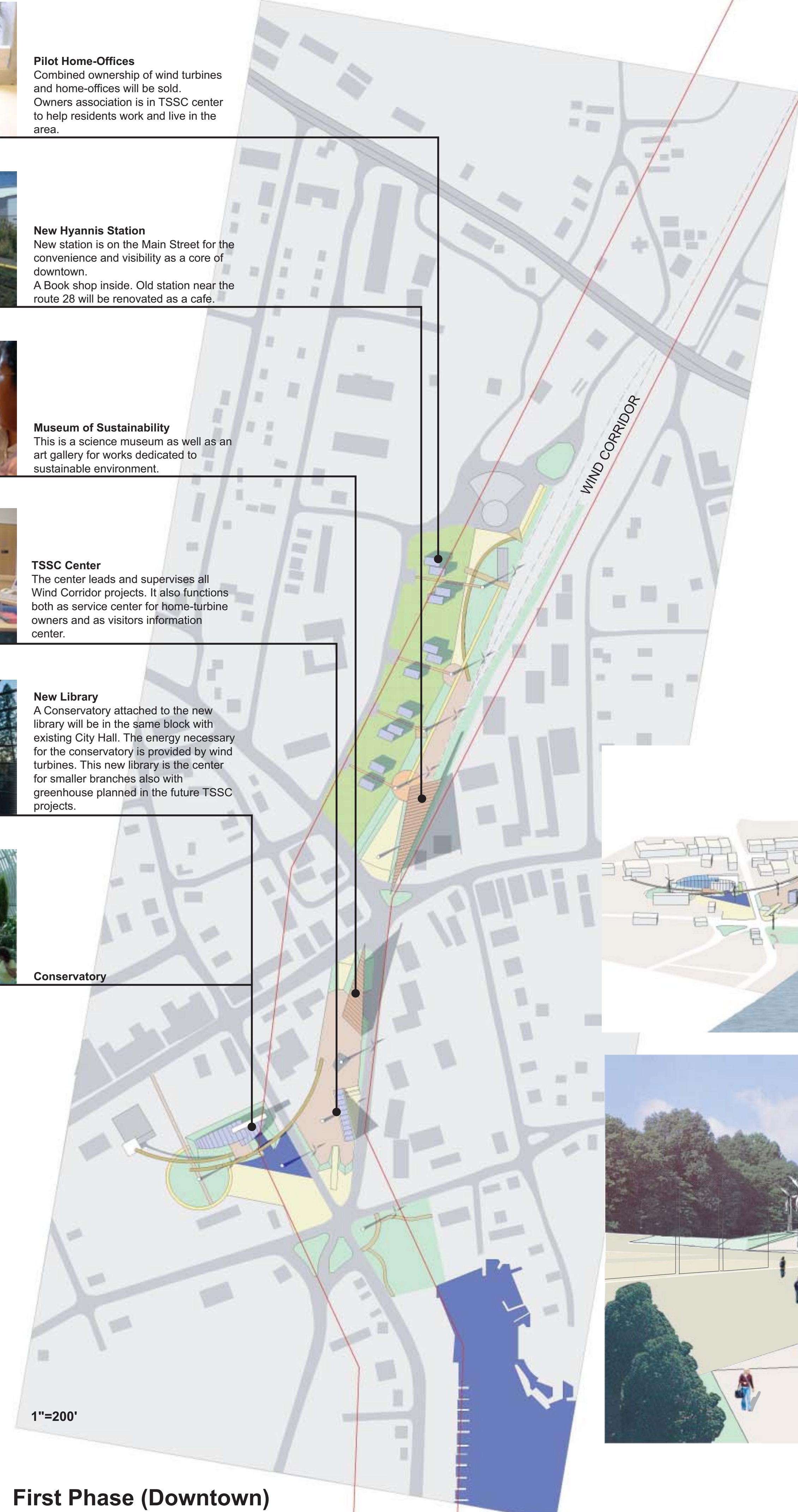
New Library
 A Conservatory attached to the new library will be in the same block with existing City Hall. The energy necessary for the conservatory is provided by wind turbines. This new library is the center for smaller branches also with greenhouse planned in the future TSSC projects.



Conservatory

1"=200'

First Phase (Downtown)



First Phase (Downtown)

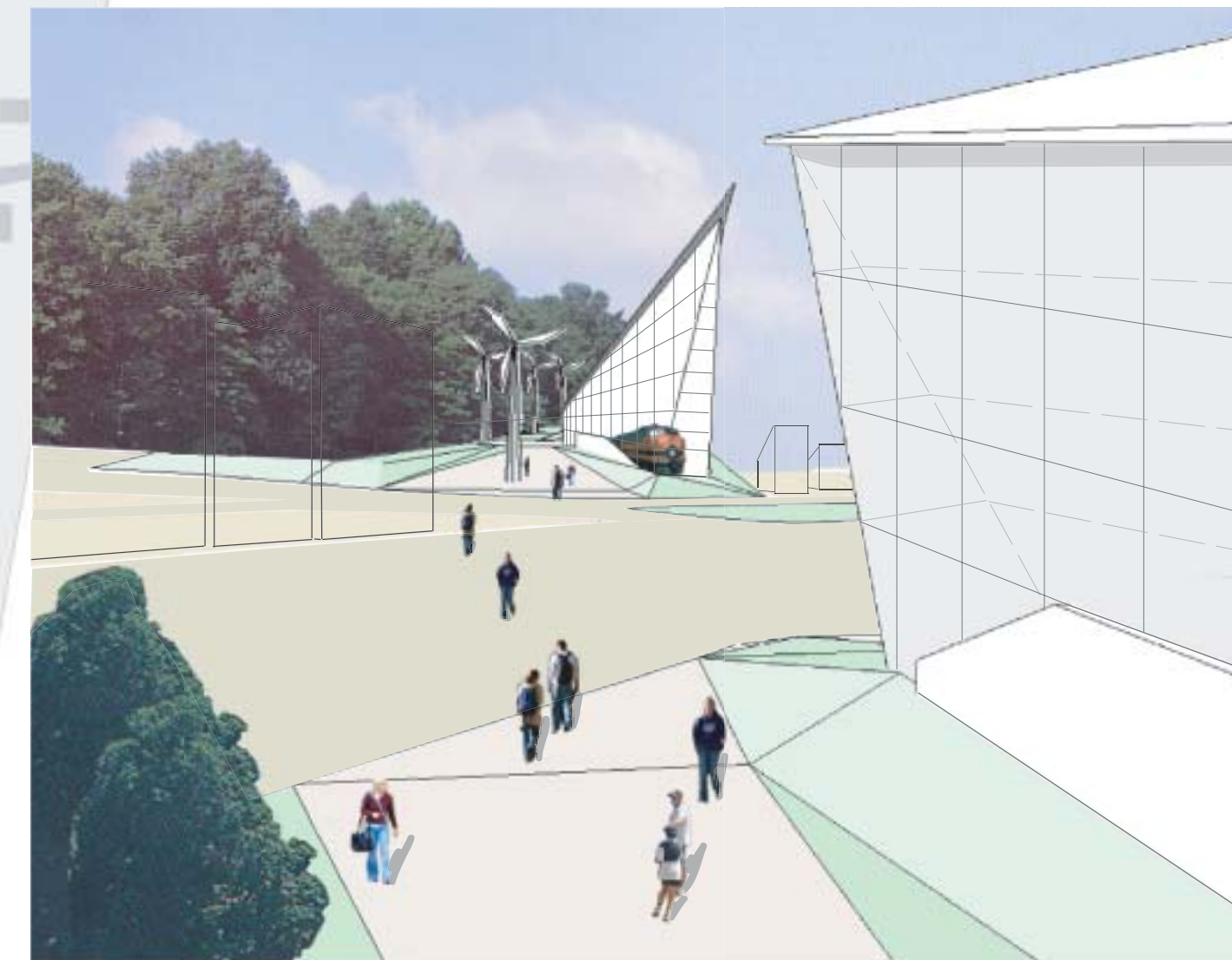
First phase in downtown is along Old Colony Road and existing railroad from Hyannis Port to Route 28. Main Street crosses its center. Nine smaller wind turbines (70 feet high) are lined. Four new or expanded facilities and pilot home-offices are planned.

First Phase (Shore)

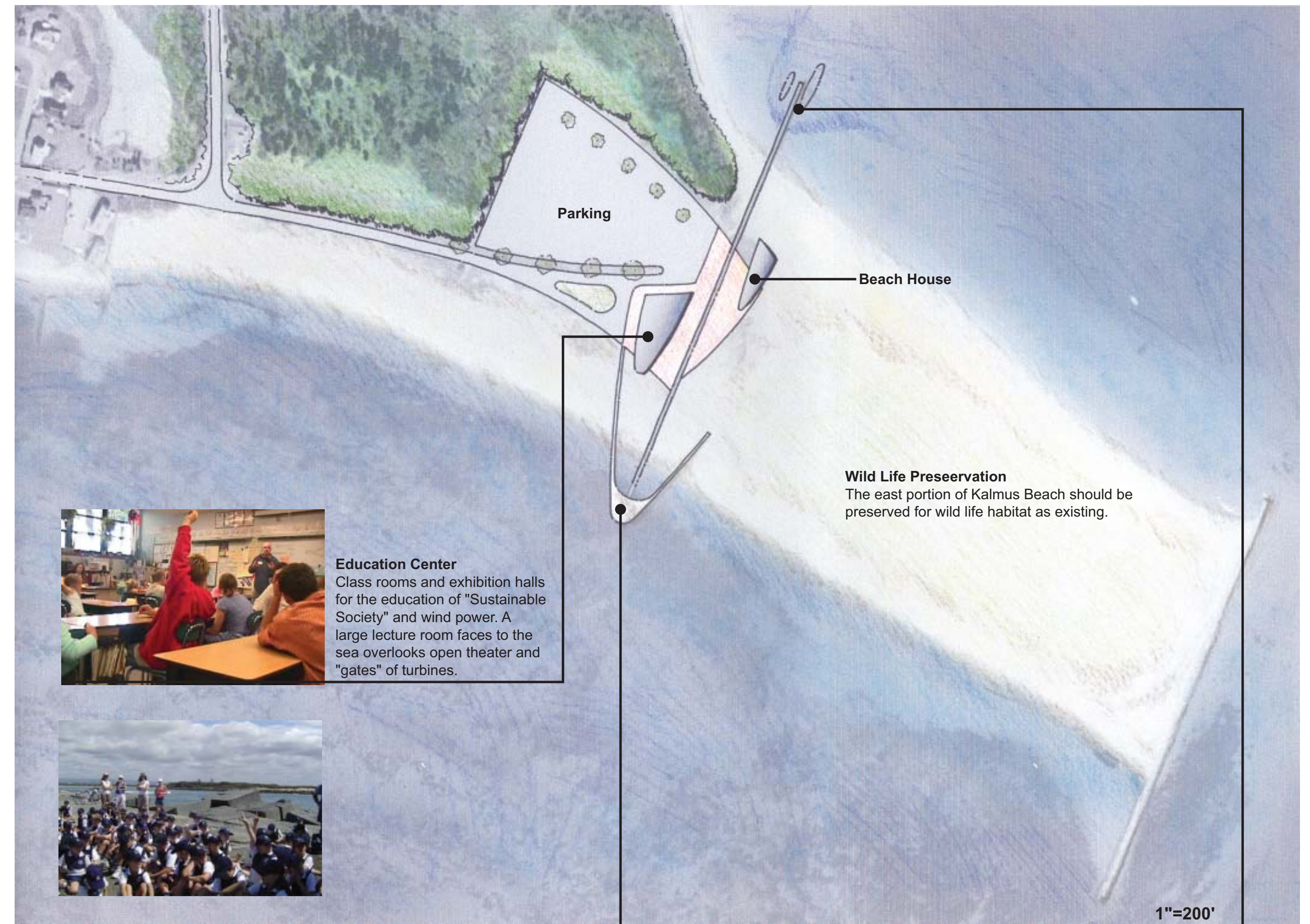
"Gates" of wind turbines function as a stage and a runway to something imaginative. As a key connector between land and sea portions of Wind Corridor, facilities on the shore function as viewpoint and a point of departure to the narrative entertainment.



Axon of Downtown from Hyannis Port



New Hyannis Station and Smaller Wind



Parking

Beach House

Wild Life Preservation
 The east portion of Kalmus Beach should be preserved for wild life habitat as existing.

Education Center

Class rooms and exhibition halls for the education of "Sustainable Society" and wind power. A large lecture room faces to the sea overlooks open theater and "gates" of turbines.



1"=200'

Open-Air Theater

A line of low wall shaped like a curved pier is a stage for operas at night and educational story telling in the daylight. Audiences sit on the sand to enjoy the natural atmosphere. Waterline of the sand (the seats) moves up and down depending on the tide.



Boat-ride Pier

Story boat-rides to go under "Gates" of turbines to Nantucket Island depart here. During the day, Wi-Fi access on the boats allows the riders enjoy computer animated story tellings. At night, series of holograms will be displayed between the "Gates" of turbines to enhance the experiences.



"Gate" of Turbines and Education Center

First Phase (Shore)